



RaQuest Install Manual

by Sparx Systems Japan

RaQuest 4.4 English Version Install Manual



1. Introduction

This is the installation manual for RaQuest 4.4 English Version. RaQuest requires Enterprise Architect to run. Before installing RaQuest 4.4, you must install Enterprise Architect Version 9.0 or later version.

License Manager's version must be 1.3 or later version.

You must login with “administrative privileges” to install the software. Login via Administrator or equivalent user given administrative privileges.

2. Installation Procedure

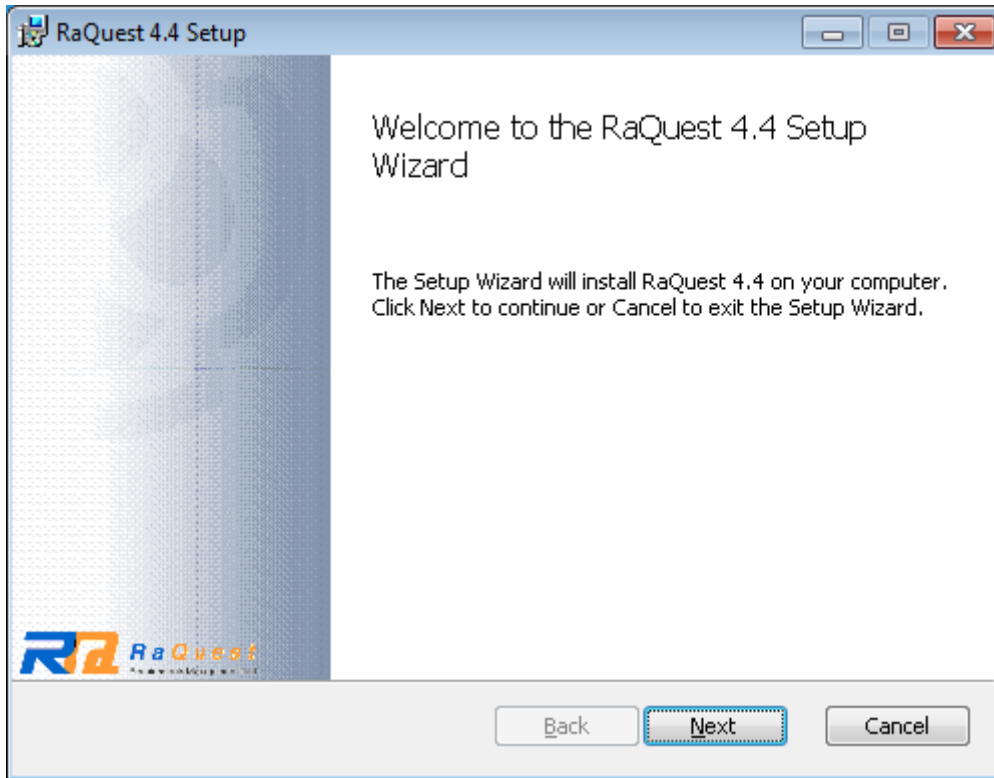
The followings are the preparations to run the installer.

Firstly, download the installer through Internet. The URL, ID, and password are indicated on your e-mail by which your license key was issued.



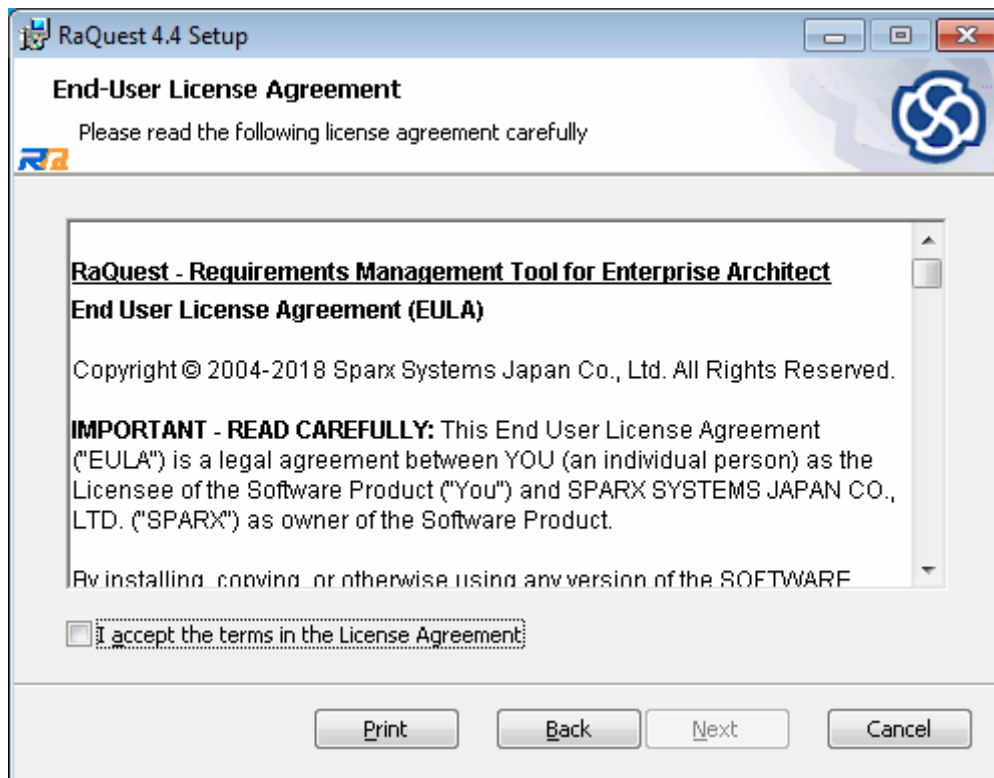
You will find **RaQuest***En.exe** (***) is number) in the folder you specified at downloading. Double click this file.

When installation has been started, this dialog box below will be displayed.

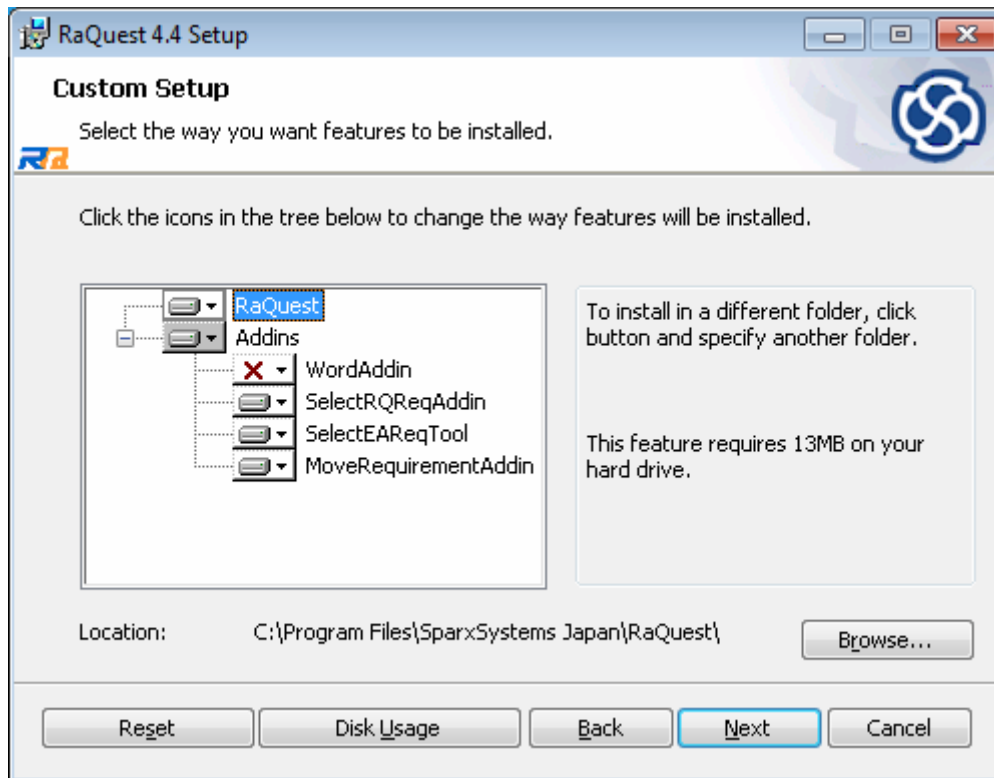


Click **Next** button.

Next dialog box is about license agreement.



Read the agreement. If you agree with the terms and conditions, select **I accept the terms in the License Agreement** and click **Next** button. If you do not agree, you cannot install the software.



On this dialog box above, specify a folder in which to install. The default setting is “C:/Program Files/SparxSystems Japan/RaQuest/.” This default setting is generally acceptable though, you may change as necessary.

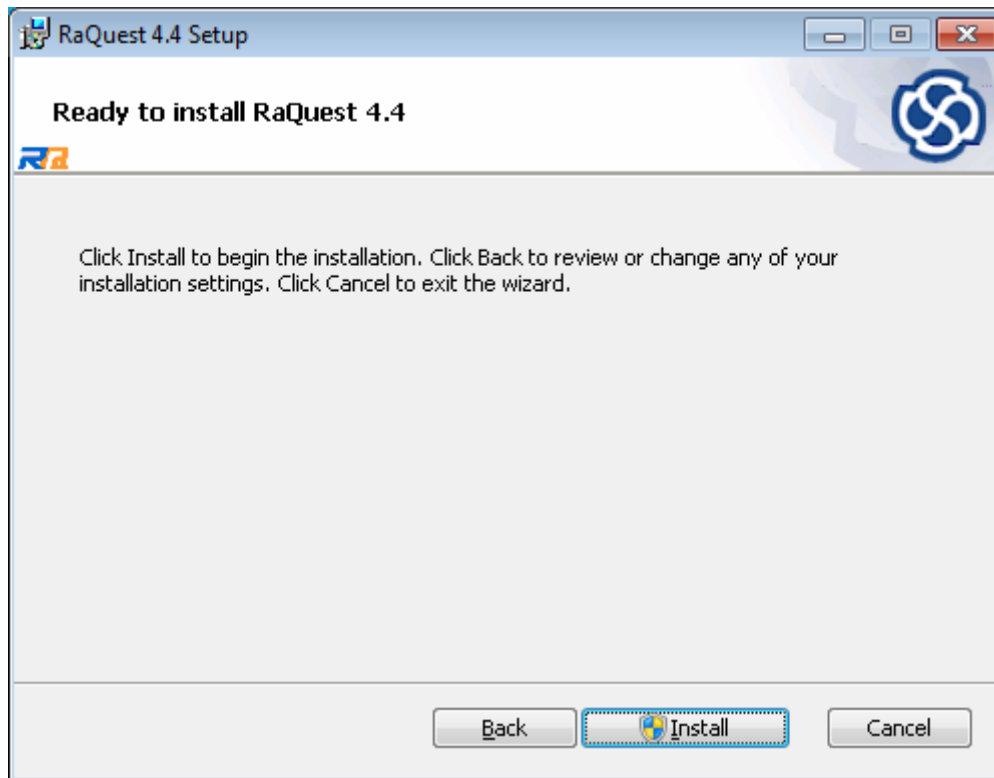
Microsoft Word Add-in can be optionally installed. **Word Add-in** is a tool to register requirement to RaQuest. It runs on Microsoft Word add-in features. If Microsoft Word is not installed on your system, do not install this option to avoid installation errors.

SelectRQReqAddin selects RaQuest’s requirement – Enterprise Architect addin.

SelectEAReqTool selects Enterprise Architect’s requirement – RaQuest tool.

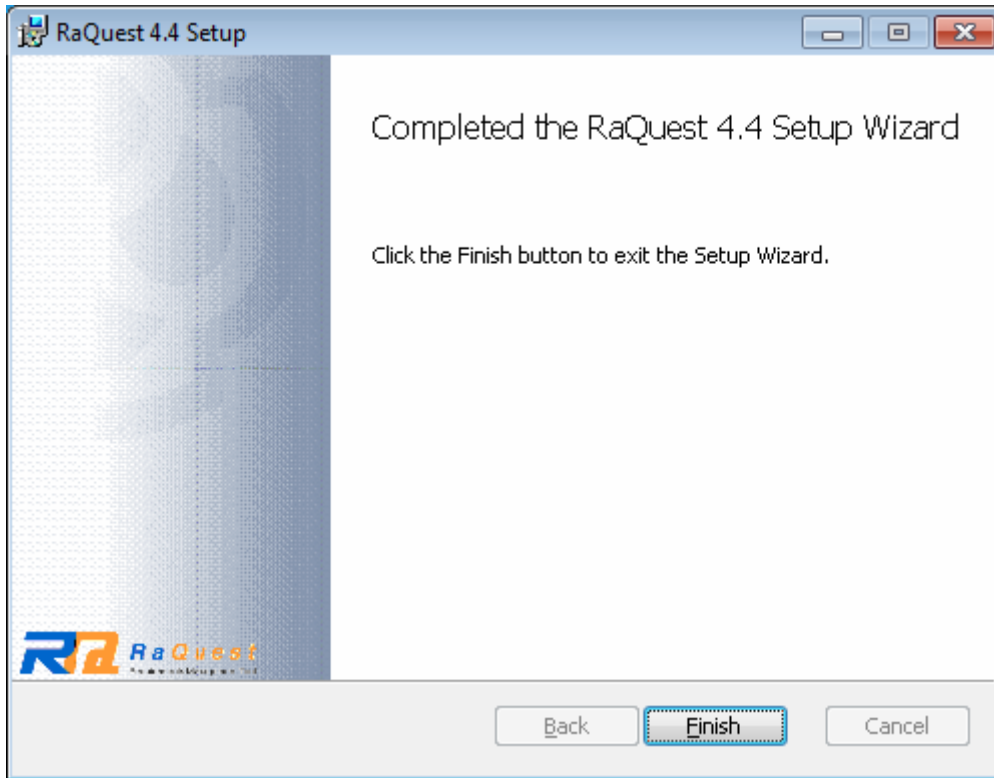
MoveRequirementAddin moves new requirement of Enterprise Architect into RaQuest package to make the requirements under the control of RaQuest – Enterprise Architect addin.

Next dialog box is displayed for confirmation.



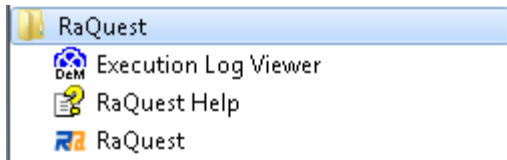
Click **Install** button. Then, the actual installation procedure begins. Installation takes one to several minutes, depending on the computer specifications and other conditions.

Installation completes with this dialog box below.



3. Initial Registration Procedure

When installation is completed, RaQuest is ready to run from the **Start** menu. Click **Program | RaQuest Group**.



You will find **RaQuest**, click this to run. Another way to run RaQuest is to double click RaQuest icon on the desktop.

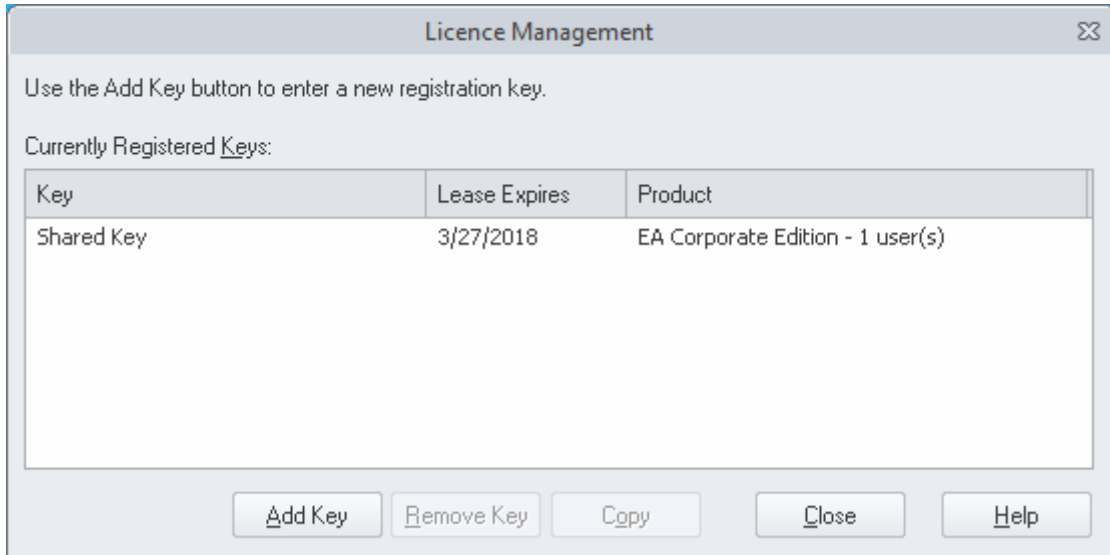
When RaQuest runs for the first time, this dialog box below will be displayed.



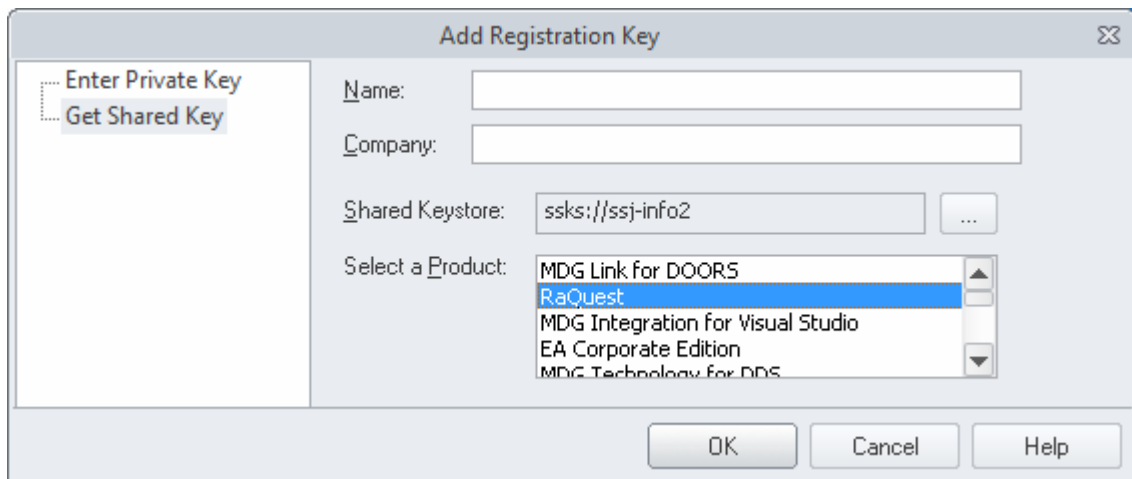
Input the license key, which has been sent to you by e-mail. For easy input, we recommend you to copy and paste the key from the e-mail.

With the valid license key, RaQuest will run. Otherwise, the dialog to ask reentry will be displayed. When **Cancel** is clicked, RaQuest will close without running.

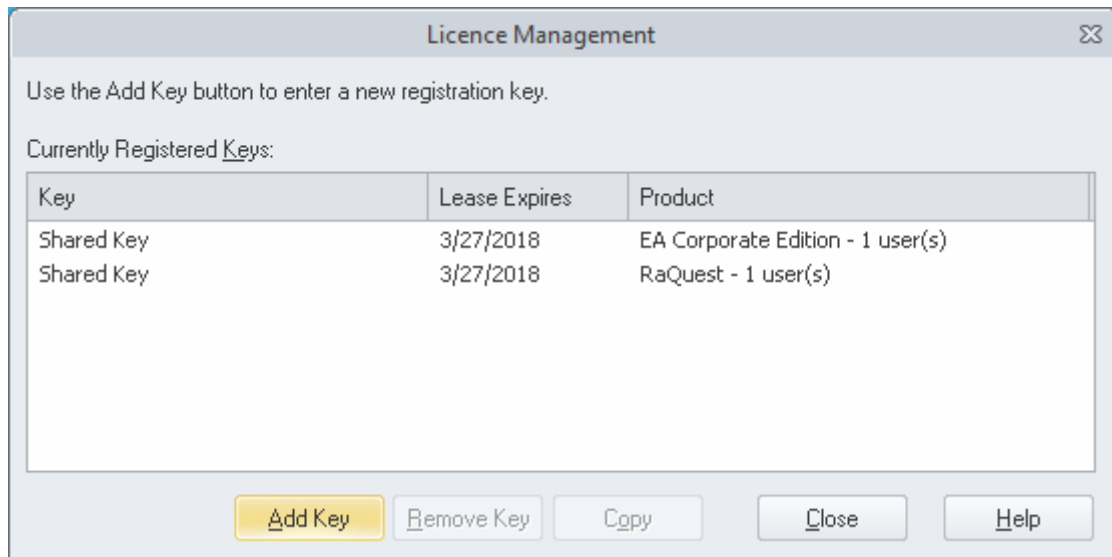
For floating license, after checking the **floating** checkbox, click **OK** button. Then, this dialog box below will be displayed.



Click **Add Key** button, then this dialog box below will be displayed.



Click the **Get Shared Key** tab, and then specify the location of the Key File. In the **Select a Product** field, select RaQuest, then click **OK** button. The license for RaQuest will be taken as below.



After taking the valid license, click **Close** button. Then RaQuest runs.

For the registration of the floating license key to License Key File, see Sparx Enterprise Key Store Help.

Now you have completed the installation. If you would like to know how to use RaQuest, please see the manuals. For initial setup and initial operation, please go to RaQuest website (<http://www.raquest.com>) to download "RaQuest Startup Manual".

4. Troubleshooting of Installation

For the troubles like the installer stops in the middle or the installation fails, please see the following URL.

http://www.raquest.com/products/troubleshooting_installation.htm