

# Requirements Management Tool



RaQuest is a Requirements management tool designed to manage Requirements more certainly.

RaQuest supports centralized management and traceability management of Requirements, which enables you to reduce the cost and improve the quality of your software development by grasping missing Requirements and the impact of Requirements Change.

## Reliable and Efficient Management of Complicated Requirements

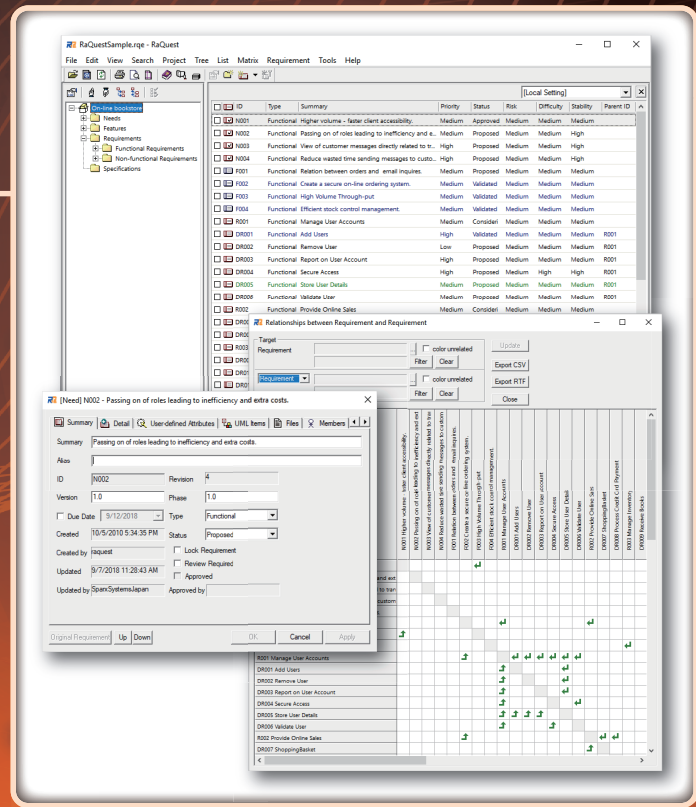
- Centralized management / Update Log for Requirements and Requirements Attributes
- Various display formats such as Tree / List

## Traceability Management

- Views for Impact Analysis / Coverage Analysis
- Traceability management of model elements from a Requirement

## Requirements Development and Management with the External Tool

- Integration with Enterprise Architect



## Efficient Requirements Management Using Tree / List

Requirements can be managed in Tree / List.

Tree manages Packages that can contain multiple Requirements, in the hierarchical structure. Tree can be switched by various viewpoints such as Status or Version.

List can show all Requirements or show only Requirements contained in a certain package on Tree.

Also, various conditions can be applied to List, such as Requirements assigned to a member or Requirements not assigned to any member.

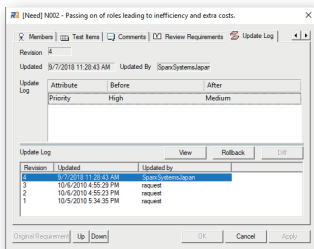
Attributes to be displayed on List can be freely changed. Values are also directly editable on List.

Requirements displayed on List can be narrowed down or searched by specific conditions. By utilizing checkboxes, you can narrow down Requirements by complicated conditions and change multiple Requirements at the same time.

## Requirements Attributes

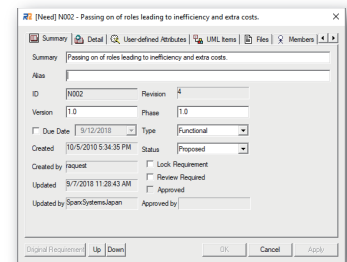
Various Attributes, not only ID / Summary / Details but also Version / Status / Priority / Due Date can be set to Requirements. User-defined Attributes are available for defining project-specific information. You can set User-defined Attributes for each Requirement.

Besides Requirement Attributes, UML items (model elements) / Files / Members / Test Items / Comments can be set.



When an Attribute updated, RaQuest automatically records when and who updated what, in the Update Log. This enables you to understand change history of Requirements.

<Requirement Update Log>



<Requirement Properties>

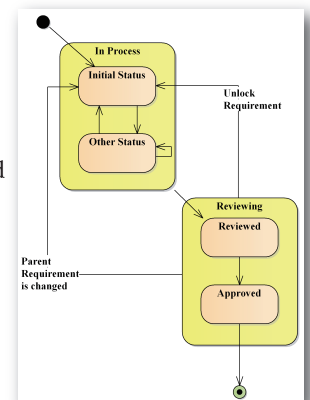
## Managing Requirements Status

Status can be set to a Requirement. RaQuest assumes the Status Transition as shown in the lower right figure and handles Initial / Reviewed / Approved as three special statuses.

Setting Reviewed / Approved status makes a Requirement locked and it cannot be changed. If the lock released (to make changes for some reason), the status will go back to Initial status automatically. Besides, the statuses of the related Requirements will also be changed to Review Required in a chain reaction.

Requirements with Review Required status can be displayed in color. With these features, you can clearly grasp the requirements impacted by the change.

Handling the status of individual requirements properly enables all persons concerned to grasp the status of requirements without misunderstanding.



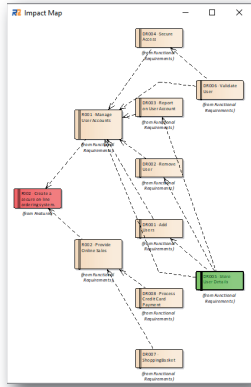
## Traceability Management Among Requirements

Dependency can be defined between Requirements.

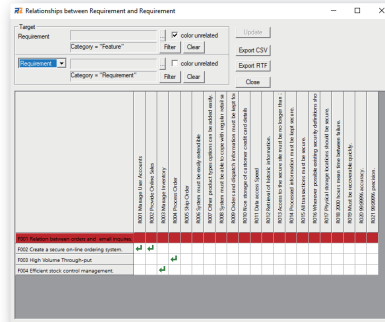
It means you can specify Requirements that can be impacted when a certain Requirement changed. Dependencies among Requirements can be easily created by dragging & dropping between List and Tree. Also, Dependencies can be created on Matrix.

Relationships among Requirements can be displayed on Relationship Map (Impact Map) or Matrix. These diagrams are useful for Impact Analysis and Coverage Analysis by clarifying relationships such as Requirements that are impacted when the destination Requirement changed or a Requirement that has no dependencies on any Requirement.

Dependencies among Requirements are used not only for being displayed but also for finding Requirements that need to be reviewed. Managing relationships among Requirements and statuses of the Requirements combined together can prevent you from overlooking the related Requirements when a Requirement changed.



<Relationship Map>



Requirement	Requirement	Relationship
REQ-001	REQ-002	Impact
REQ-001	REQ-003	Impact
REQ-001	REQ-004	Impact
REQ-001	REQ-005	Impact
REQ-001	REQ-006	Impact
REQ-001	REQ-007	Impact
REQ-001	REQ-008	Impact
REQ-001	REQ-009	Impact
REQ-001	REQ-010	Impact
REQ-001	REQ-011	Impact
REQ-001	REQ-012	Impact
REQ-001	REQ-013	Impact
REQ-001	REQ-014	Impact
REQ-001	REQ-015	Impact
REQ-001	REQ-016	Impact
REQ-001	REQ-017	Impact
REQ-001	REQ-018	Impact
REQ-001	REQ-019	Impact
REQ-001	REQ-020	Impact

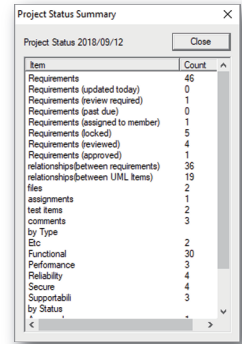
<Matrix>

## Project Status Summary

The current condition of a Requirement can be measured. Project Status Summary can show the number of Requirements / Requirements (review required) / Requirements (approved) / relationships / Requirements (by Type) / Requirements (by Status) etc.

The history of Project Status Summary can be saved and exported to a CSV file. Graphing the data in the exported CSV file with a spreadsheet software, you can visually understand the change in the number of Requirements.

Measuring the change in the number of Requirements helps to understand the current status of the Project.



Item	Count
Requirements	46
Requirements (updated today)	0
Requirements (review required)	1
Requirements (past due)	0
Requirements (assigned to member)	1
Requirements (locked)	5
Requirements (reviewed)	4
Requirements (approved)	1
relationships between requirements	36
relationships between UML items	19
files	2
assignments	1
test items	2
comments	3
by Type	2
ETC	30
Functional	3
Performance	4
Reliability	4
Secure	4
Supportability	3
by Status	-

## Import / Export of Requirements Information

Requirements in RaQuest can be exported to an HTML file or an RTF file (Rich Text Format) compatible with Word. The RTF template for export is customizable. Also, CSV / Excel formats are available for Requirements export. The export feature enables you to utilize Requirements information in RaQuest in various ways.

As for import, CSV formatted data can be imported.

Existing Requirements managed in a spreadsheet software can be imported into RaQuest without change. Using the import / export feature, it is possible to export Requirements to a CSV file and edit it with a spreadsheet software and import it again into RaQuest.

## Integration with Enterprise Architect

Requirements created in RaQuest are stored in a project file of Enterprise Architect without exception. In other words, items created in RaQuest are referable and editable in Enterprise Architect. Both RaQuest and Enterprise Architect are available for connecting Requirements with Use Cases and UML Items. This enables you to trace the relationships from each Requirement to the Use Cases and the UML Items.

Also, Requirements defined in Enterprise Architect for an existing project file can be read in RaQuest. This is effective for creating Requirements in RaQuest, when Enterprise Architect has been already introduced or used for depicting workflows.

RaQuest supports SysML Requirements. RaQuest can handle Requirement elements on SysML Requirement Diagrams. Also, Relationship Maps can be depicted in the notation of SysML Requirement Diagram.

### Price

RaQuest Standard License US\$156/License  
RaQuest Floating License US\$280/License

Note: RaQuest requires Enterprise Architect.

Download your FREE 30 day trial:  
[https://www.raquest.com/products/raq\\_downloads.htm](https://www.raquest.com/products/raq_downloads.htm)

### Contact

Contact email address :  
[global@sparxsystems.jp](mailto:global@sparxsystems.jp)

For more information :  
<https://www.raquest.com/>