



---

**RaQuest Install Manual**

*by SparxSystems Japan*

**RaQuest 3.2 English Version Install Manual**



## 1. Introduction

This is the installation manual for RaQuest 3.2 English Version. RaQuest requires Enterprise Architect to run. Before installing RaQuest 3.1, you must install Enterprise Architect Version 5.0 or later version.

Floating license requires Enterprise Architect 6.1 Build 788 or later build (version). License Manager's version must be 1.3 or later version.

**If you have installed Trial Version, you must uninstall it before installing RaQuest Registered Version.**

**You must login with "administrative right" to install software. Login via Administrator or equivalent user given administrative right.**

## 2. Installation Procedure

The followings are the preparations to run the installer.

Firstly, download the installer through Internet. The URL, ID, and password are indicated on your e-mail by which your license key was issued.



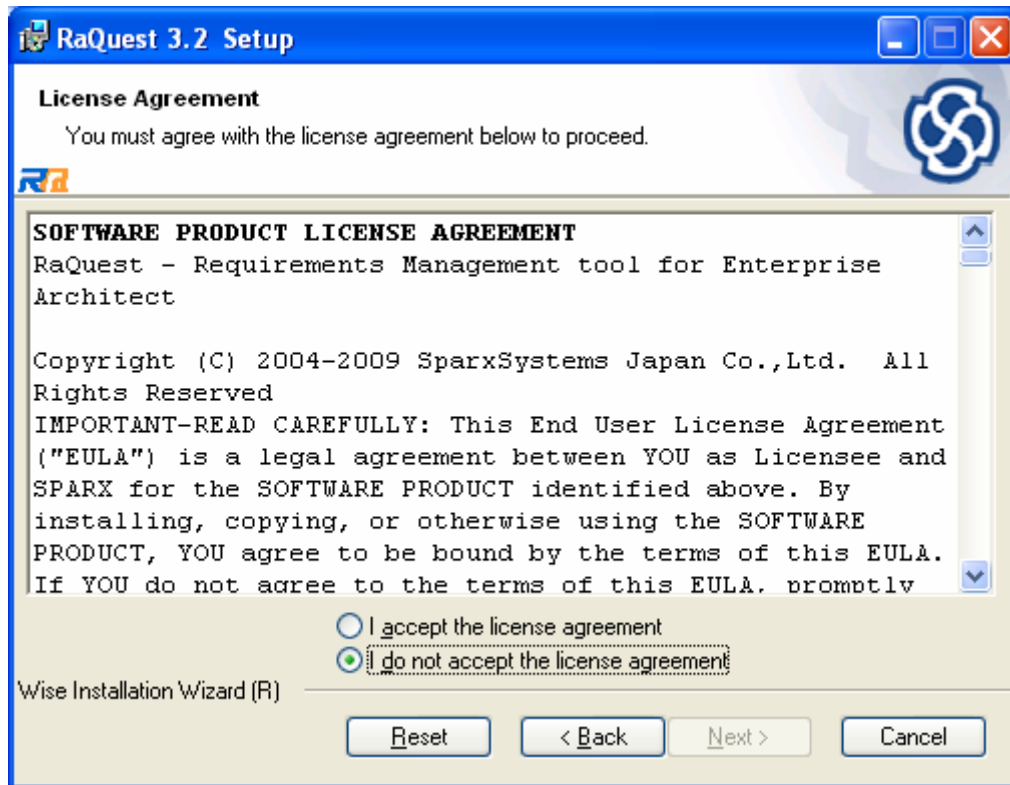
You will find **RaQuestEn.exe** in the folder you specified at downloading. Double click this file.

When installation has been started, this dialog box below will be displayed.

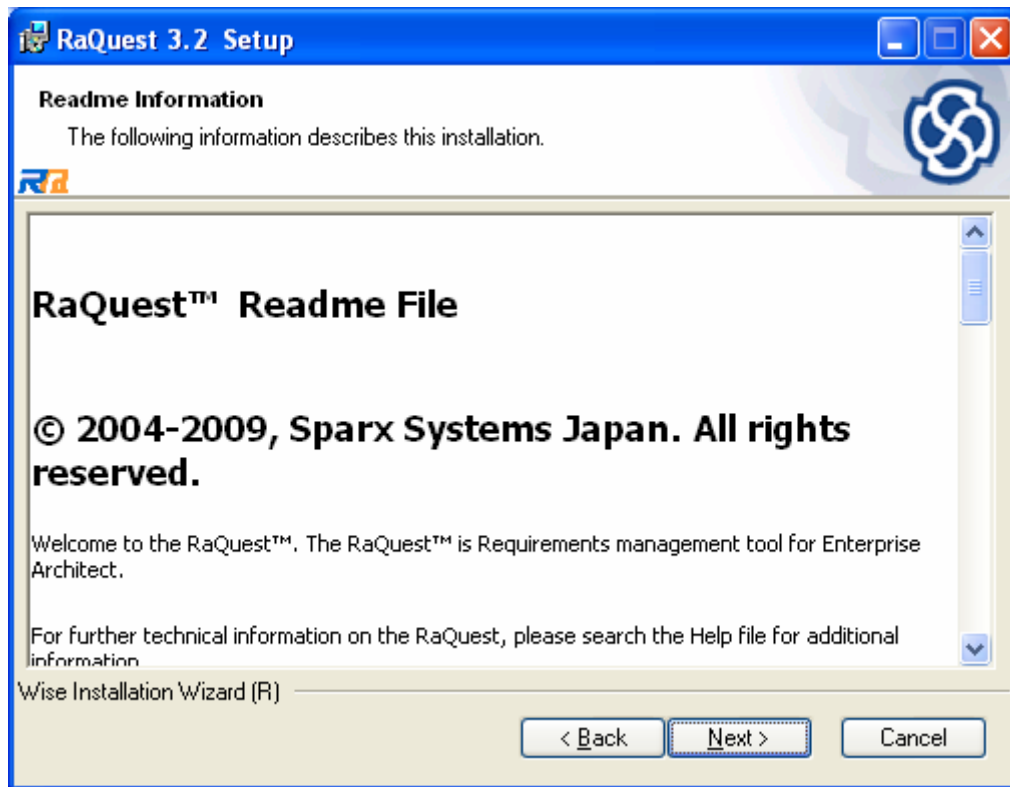


Click Next.

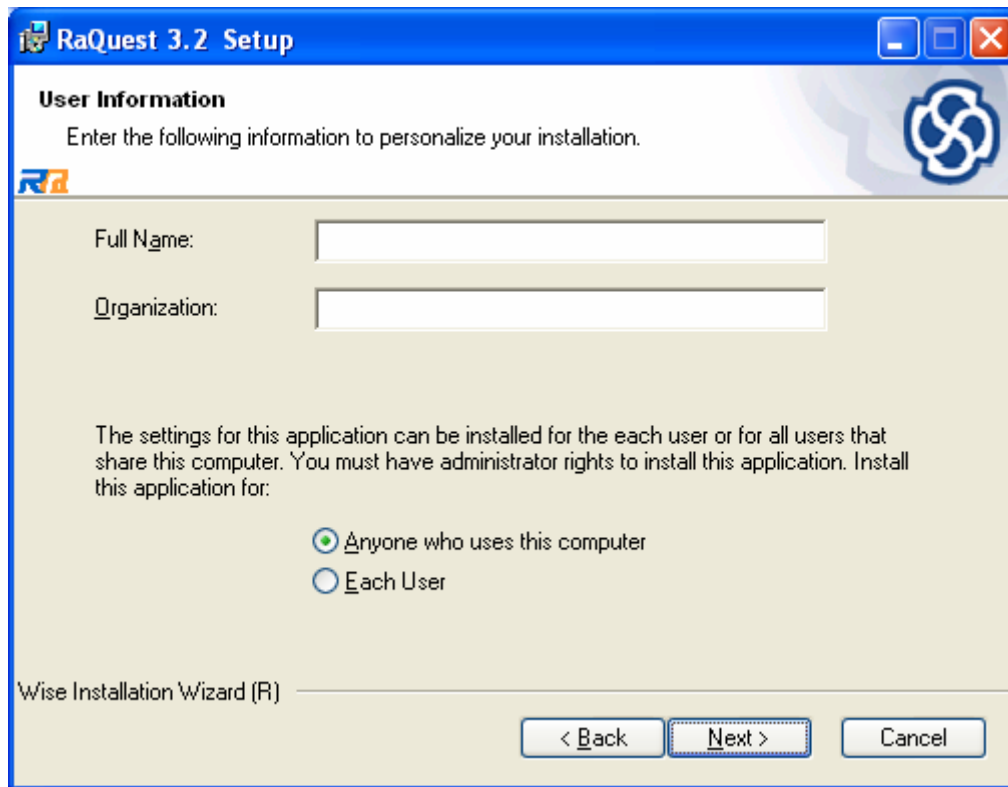
Next dialog box is about license agreement.



Read the agreement. If you agree with the terms and conditions, select "I accept the license agreement" and click Next. If you do not agree, you cannot install the software.



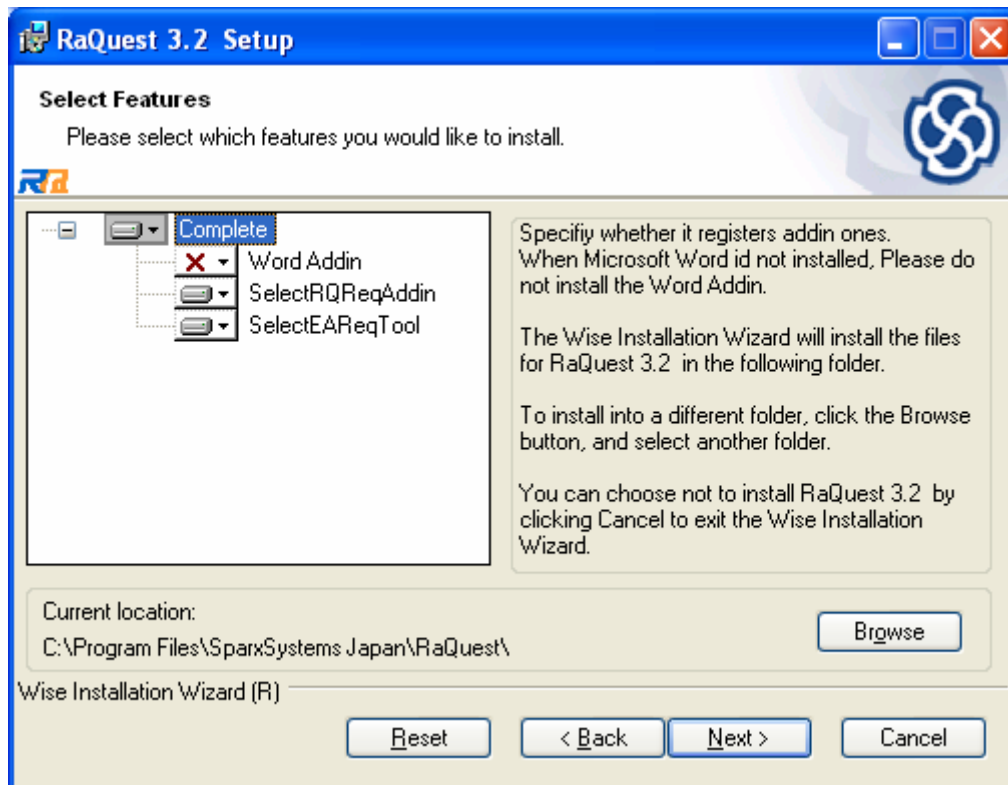
This Readme dialog box provides general instruction. After reading, click Next.



On this dialog box above, enter your full name and organization. Organization can be blank.

You have an option setting whether you wish to install RaQuest with all the users who share this computer. The default setting is to install as anyone who uses this computer. As necessary, select "Each User" which requires a license by each user.

Then, click Next.



On this dialog box above, specify a folder in which to install. The default setting is “C:/Program Files/SparxSystems Japan/RaQuest/” . This default setting is generally acceptable though, you may change as necessary.

Microsoft Word Add-in can be optionally installed. “Word Add-in” is a tool to register requirement to RaQuest. It runs on Microsoft Word add-in features. If Microsoft Word is not installed on your system, do not install this option to avoid installation errors.

“SelectRQReqAddin” is select RaQuest’s requirement – Enterprise Architect addin.

“SelectEAReqTool” is select Enterprise Architect’s requirement – RaQuest tool.

Next dialog box is displayed for confirmation. Click Next. Then, the actual installation procedure begins. Installation takes one to several minutes, depending on the computer specifications and other conditions.

Installation completes with this dialog box below.



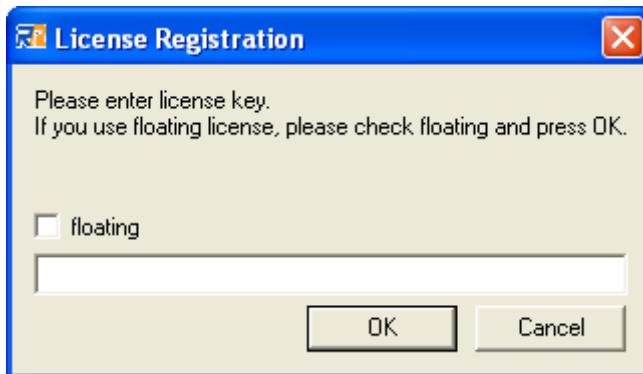
### 3. Initial Registration Procedure

When installation is completed, RaQuest is ready to run from the Start menu. Click Program, then click RaQuest Group.



You will find RaQuest, click this to run. Another way to run RaQuest is to double click RaQuest icon on the desktop.

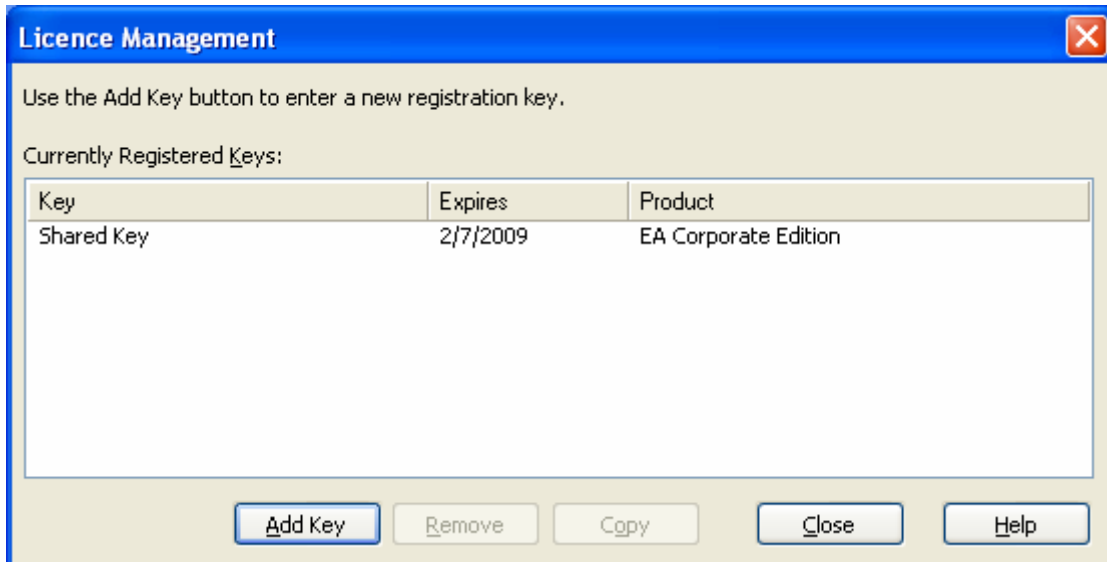
When RaQuest runs for the first time, this dialog box below will be displayed.



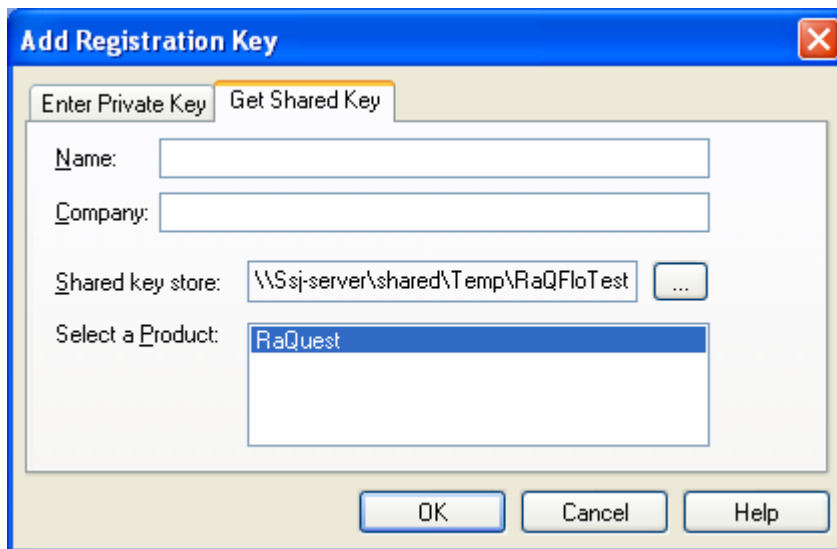
Input the license key, which has been sent to you by e-mail. For easy input, we recommend you to copy and paste the key from the e-mail.

With the valid license key, RaQuest will run. Otherwise, the dialog to ask reentry will be displayed. When Cancel is clicked, RaQuest will close without running.

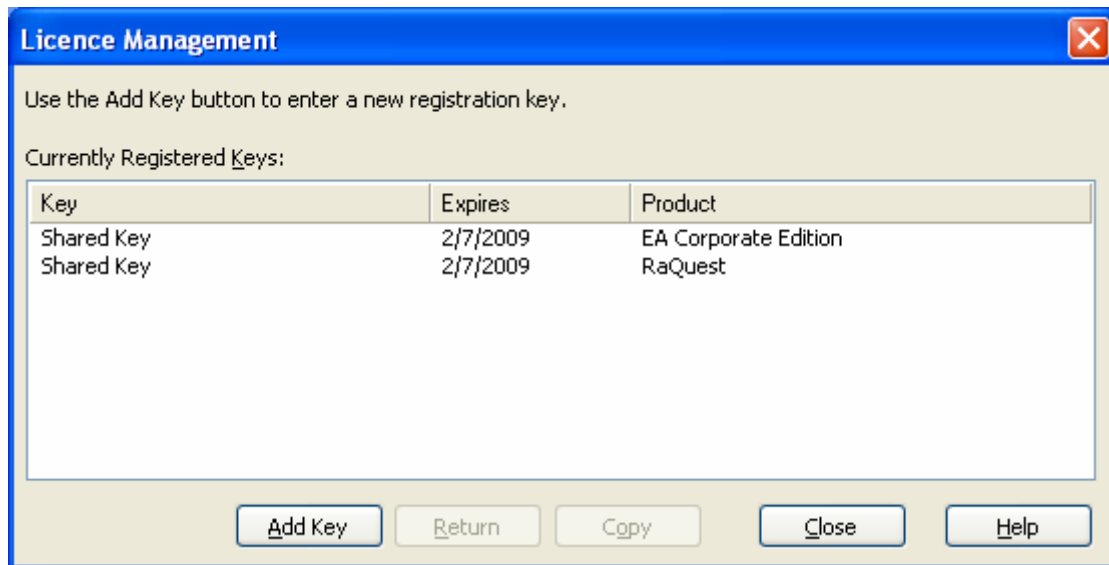
For floating license, after checking “floating”, click OK. Then, this dialog box below will be displayed.



Click “Add Key”, then this dialog box below will be displayed.



Click the Get Shared Key tab, and then specify the location of the Key File. In the Select a Product column, select RaQuest, then click OK. The license for RaQuest will be taken as below.



After taking the valid license, click Close. Then RaQuest runs.

For the registration of the floating license key to License Key File, see Sparx Enterprise Key Store Help.

Now you have completed the installation. If you would like to know how to use RaQuest, please see the manuals. For initial setup and initial operation, please go to RaQuest web site (<http://www.raquest.com>) to download "RaQuest Startup Manual".